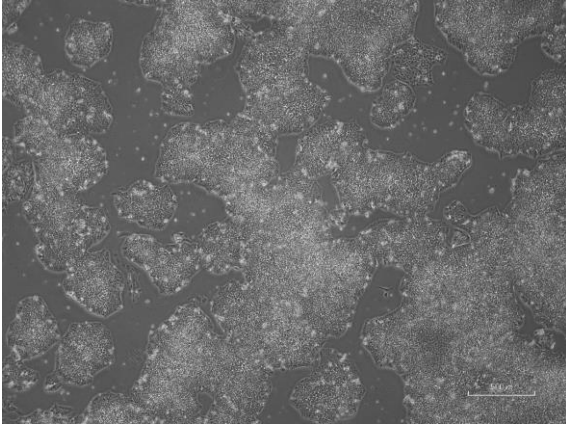
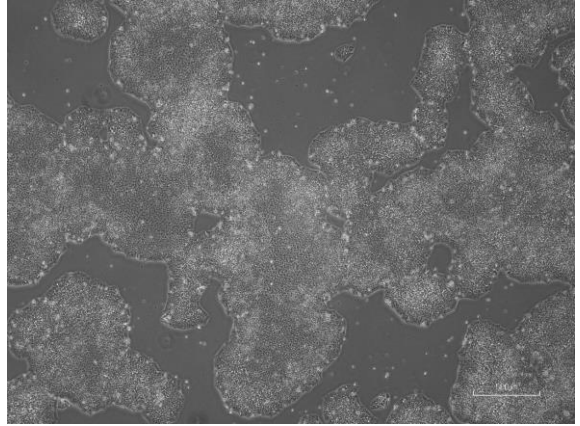


【 CiRA-jk-0125 】 Morphology of iPSC colonies

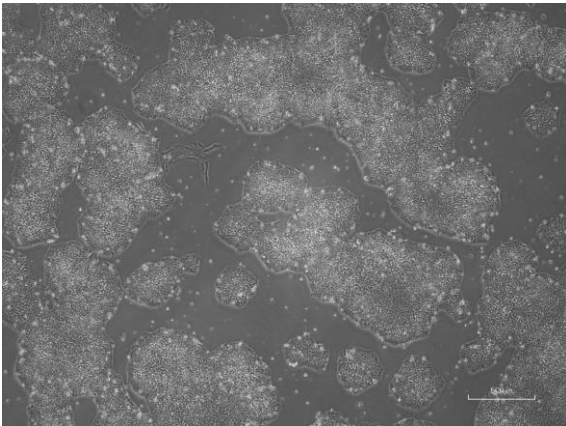
CiRA-jk-0125-A: passage-3



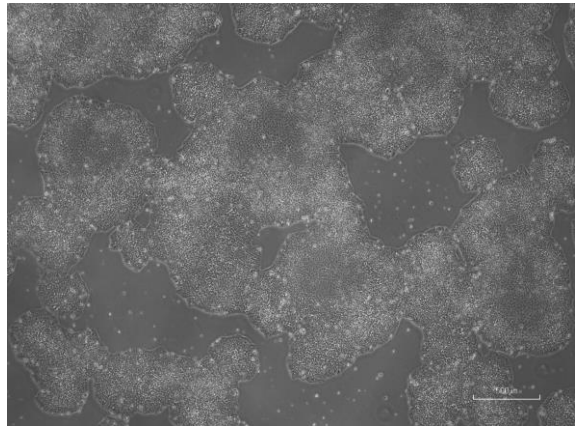
CiRA -jk-0125-B: passage-3



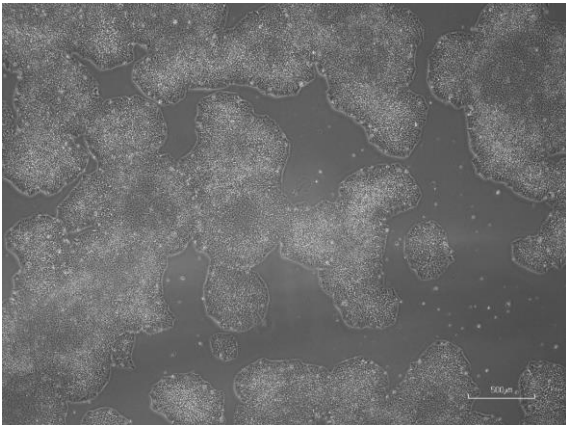
CiRA -jk-0125-C: passage-3



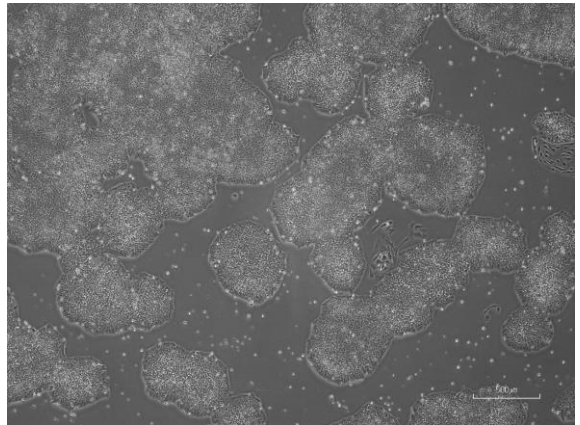
CiRA -jk-0125-D: passage-3



CiRA -jk-0125-E: passage-3



CiRA -jk-0125-F: passage-3



(All images were captured at 4x magnification)